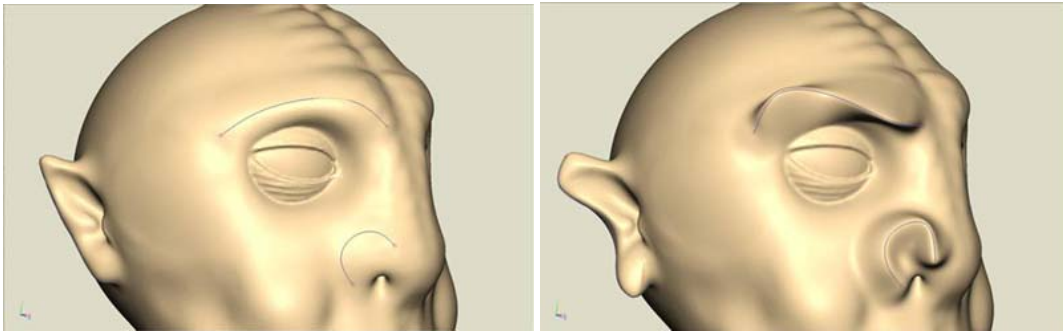


Version 10 of the FreeForm® Modeling™ and FreeForm® Modeling Plus™ software includes new and enhanced features and functionality based on customer input and practical workflows. This document contains only fraction of what is new in v10. If you are interested to learn more about v10, contact your local reseller or send an email to info@sensable.com.

- **Add intricate surface details**

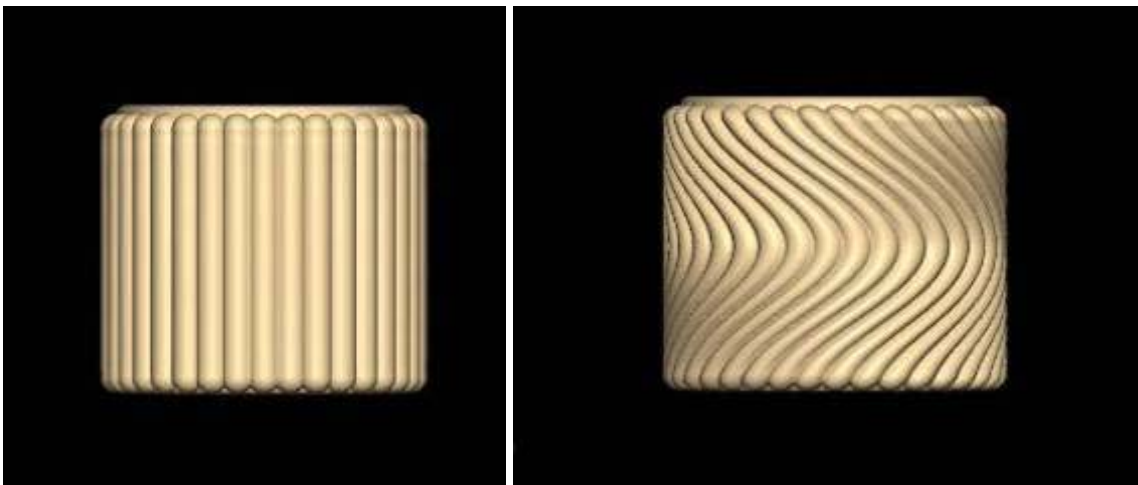
Sharpen details, create folds, and wrinkles and thin areas of clay. Can be used in scan cleanup workflows for capturing lost detail.



Curves are drawn at the brow and nose

Curves are tugged and clay is deformed

- **New deformation tools enable twisting, bending and inflating**



Design before deformation

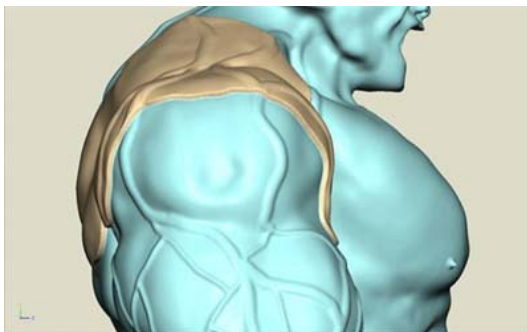
After deformation

- **Use new deform tools to remap geometry along a curve**

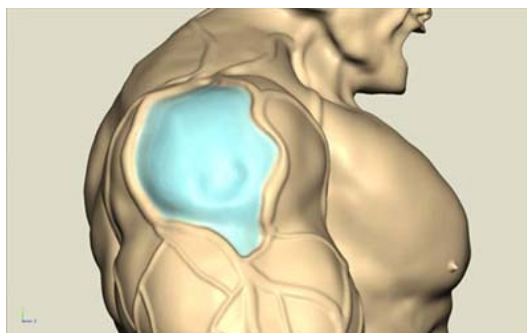


- **Improved precision when sculpting**

Use the Layer and Limit Depth tools to add or remove clay respectively at a specified thickness.



Volume of clay is added to the shoulder - The layer of clay mimics the surface beneath it; if there are dimples or ridges in the surface, the added clay reflects them. Multiple passes over the same area does not add more material.

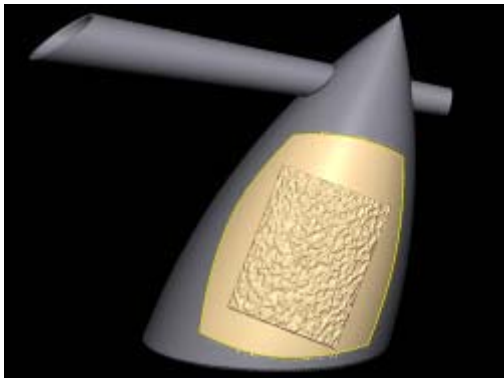


A carve tool is used to remove volume showing protected region beneath - When the defined limit is reached you are haptically restricted and the clay surface is colored a light blue.

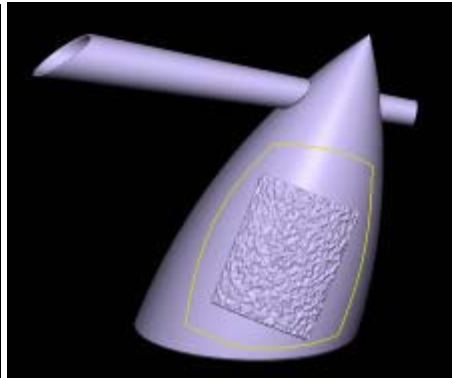
- **Improved interoperability with CAD**

New and enhanced tools for creating and manipulating multiple geometry types in one environment.

Add sculptural details to defined regions of imported mesh or NURBS models and stitch into a water-tight model for accurate manufacturing.

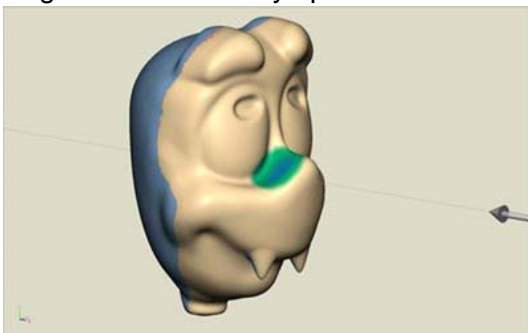


Voxelized textured region

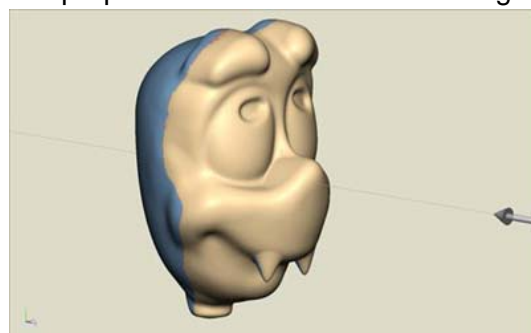


Decimated and Stitched

- **Support for More Vector Formats** – Added support for DXF Import/Export, Adobe Illustrator and PDF Export for use in blueprint design and tooling.
- **Better interoperability with 3rd party rendering packages** – Enhanced Obj export functionality reduces import time into 3rd party packages.
- **Faster Prep for Manufacturing** - The added ability to select defined regions of a model for fixing draft dramatically speeds the time it takes to prepare a model for manufacturing.



Area with undercuts selected



Fix Draft is applied and only the selected area is modified