

LAB TRIBUNE

The World's Dental Lab Newspaper · U.S. Edition

September 2010

www.dental-tribune.com

Vol. 1, No. 4

Staying ahead of lab technology

Smart choices reap big benefits

By Kristine Van Cleve,
Dental Prosthetic Services

Digital technology is rapidly transforming the dental industry, and as a forward-looking dental lab, it's important for us to constantly review and adopt the best new products and techniques, so we can offer the best solutions to our doctors and their patients.

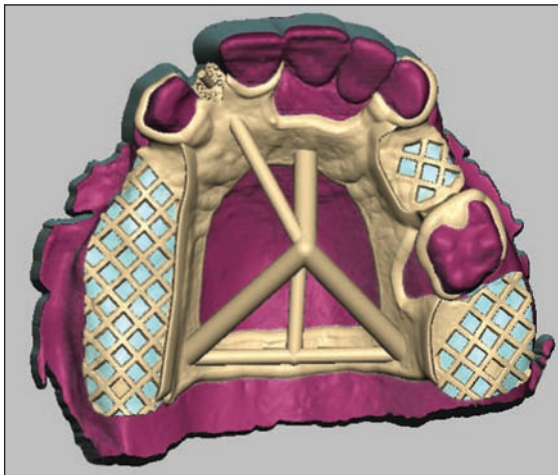
It's equally important for doctors to know that their lab has chosen a digital platform that provides flexibility — in design, materials and the ability to handle the challenging cases, in addition to the textbook ones, with the same digital accuracy and precision.

Dental Prosthetic Services (DPS) recently purchased the SensAble Dental Lab System, an integrated solution for the scan, design and fabrication of both fixed and removable restorations, because we liked its flexibility and economics.

We initially made the purchase for our full contour crown and bridge work, but because the system allowed us to easily and accurately create removables, we increased our business in partial frameworks, a previously small portion of our work.

For example, we recently had a maxillary removable partial denture case that included a tube tooth on #7 and required an A-P Strap for retention.

Using the SensAble System on this case had distinct advantages over traditional hand waxing. The technician was easily able to digitally design retention beads to hold and support the acrylic tube tooth, which are impractical and difficult to create when hand waxing. Also, the A-P Strap has a more consistent fit when



Completed digital design created on the SensAble Dental Lab System. (Photos/Provided by SensAble Technologies)



3-D printed resin pattern from the SensAble system.



Finished metal partial.

designed with the SensAble System. Additionally, digitally designing the structure of the sprues, which are used to support the partial during the investment process, adds to the stability and limits distortion.

Our doctors are very pleased with SensAble restorations. They fit right the first time, allowing doctors to save significant chair time, while providing patients with esthetically pleasing restorations.

"DPS' outstanding technicians have always provided my practice with consistent high-quality frameworks," said Dr. Clinton Berryman of Oelwein, Iowa. "But now they're designing them digitally, and the precision and fit is even

better. The accuracy of the fit decreases chair time and gives patients confidence in their new appliance."

We've also invested in a number of other open technologies that work with SensAble, including the 3D Systems ProJet 3-D printer, which is integrated with the system, and our Dental Mill for milling zirconia and PMMA materials.

Before we make any decisions on technology, we do extensive research on the solutions to make sure they are right for our lab — and our doctors. We also believe that having supportive and responsive

vendor-partners, such as SensAble, is an important part of the equation.

Our philosophy is that we're all in this together — labs, doctors and technology providers.

By choosing the right partners and investing wisely, dental labs and doctors can benefit today, while confidently moving forward together toward even higher quality care and greater efficiency.



181 Ballardvale Street
Wilmington, MA 01887
Phone: 781.937.8315
Fax: 781.937.8325
info@sensable.com
www.sensabledental.com